

Kingston Irish Slow Session Beginner's Tunebook

Selected Easier Airs, Jigs, Polkas, Reels, and Hornpipes



A sampling of easier tunes played at the weekly slow session, suitable for beginner's or experienced musicians new to the Irish repertoire.

Sponsored by:

**Comhaltas Ceoltoirí Éireann (CCE) -
(The Society of Irish Musicians)
Kingston Harp of Tara Branch**

All Tunes compiled and arranged by:
Robert MacDiarmid, Paul McAllister, and Sheila Menard

Web Sites: Harp of Tara <http://www.srayner.ca/comhaltas/>
CCE www.comhaltas.ie

Index, Notes

A **session** (seisiún) is just a bunch of friends in a circle, enjoying a few tunes together. A 'slow' session is a session for people new to their instruments or for experienced musicians new to the Irish repertoire. There's a limited, easy to learn repertoire, and the tunes are played at an accessible pace. .

Harp of Tara sponsors a weekly slow session, every Tuesday evening at 7:30, at Ben's Pub in the winter and outside in the summer. The slow session welcomes people of all ages, at all levels, on all instruments. We provide a music book, and cds of the tunes played slowly. It's an excellent way for beginners to see how much fun a trad session can be and also a good place for the more experienced to pick up a tune or two. The atmosphere is friendly and the tunes are wonderful. No charge.

Check the Harp of Tara Website - the 'Music' page - for further details:

<http://www.srayner.ca/comhaltas/>



The Tunes

Dawning of the Day -----	<i>Air, March.</i>	Page 1
Sally Gardens -----	<i>Air</i>	Page 1
Egan's -----	<i>Polka</i>	Page 2
Britches Full of Stitches -----	<i>Polka</i>	Page 2
Top of Maol -----	<i>Polka</i>	Page 3
Cuz' Teehan's -----	<i>Fling</i>	Page 3
Drumshanbo -----	<i>Jig</i>	Page 4
Killavil Jig -----	<i>Jig</i>	Page 4
Road to Lisdoonvara -----	<i>Slide</i>	Page 5
O'Keefe's -----	<i>Slide</i>	Page 5
Boys of Bluehill -----	<i>Hornpipe</i>	Page 6
Off To California -----	<i>Hornpipe</i>	Page 6
Banshee, the -----	<i>Reel</i>	Page 7
Castle Kelly -----	<i>Reel</i>	Page 7

Note: a very good introduction to the playing of Irish music, an explanation of the different kinds of tunes – jigs, flings etc. and an introduction to the modes – Dorian, Aeolian etc, and be found on the web at <http://www.treelight.com/music/irishmusic.html>

AIRS, SONGS

Air, March

Dawning of the Day / On Raglan Road

Fáinne Gael an Lae ("The bright ring of the day")

D Major



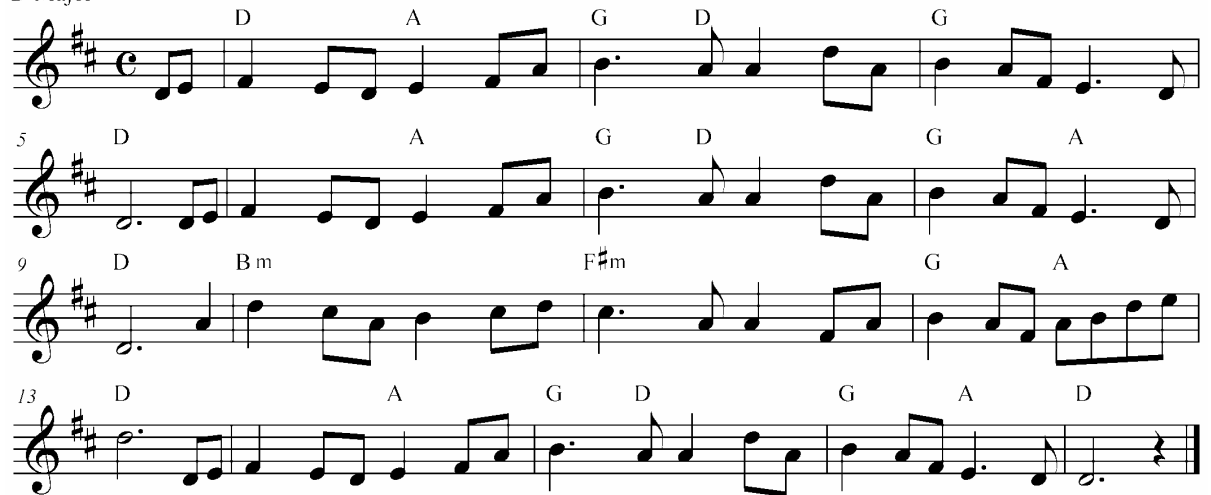
Air

Sally Gardens

Tune: Maids of the Mourne Shore, Trad., F

Arranged for whistle

D Major



Sally Gardens

(Words: W. B. Yeats, 1889.

Tune: Maids of the Mourne Shore, Trad.)

In a field down by the river, my love and I did stand
And on my leaning shoulder, she laid her snow-white hand.
She bid me take life easy, as the grass grows on the weirs
But I was young and foolish, and now am full of tears.

It was down by the Sally Gardens, my love and I did meet.
She crossed the Sally Gardens with little snow-white feet.
She bid me take love easy, as the leaves grow on the tree,
But I was young and foolish, and with her did not agree.

Down by the Sally Gardens, my love and I did meet.
She crossed the Sally Gardens with little snow-white feet.
She bid me take love easy, as the leaves grow on the tree,
But I was young and foolish, and with her did not agree.

POLKAS

Egan's Polka

Polka

D Major

aka The Kerry, Peg Ryan's.

5

9

13

O The Britches Full of Stitches

Polka

E Mixolydian

5

9

13

POLKA / FLING

Top of Maol

Polka

A Minoe - Dorian



Fling

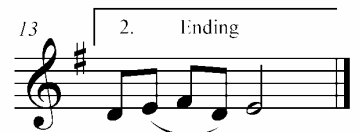
"Cuz" Teehan's

Terry "Cuz" Teehan's Fling, No. 1 aka The Kerry Fling

E Minor - Aeolian



Source: Maeve Donnelly Workshop sponsored by Harp of Tara



JIGS

Drumshanbo Jig

Jig

E Minor - Aeolian



Musical score for Drumshanbo Jig, E Minor - Aeolian, 6/8 time. The score consists of five staves of music. The first staff begins with an E m chord. The second staff has measures 5, 6, 7, 8, 9, and 10, with chords D, E m, C, D, and E m. The third staff has measures 11, 12, 13, 14, 15, and 16, with chords E m, D, E m, D, and E m. The fourth staff has measures 17, 18, 19, 20, 21, and 22, with chords G, D, E m, C, D, and E m. The fifth staff has measures 23, 24, 25, 26, 27, and 28, with chords E m, D, C, D, and E m. The score includes repeat signs and first/second endings.

Killavil Jig

Jig

E Minor - Aeolian



Musical score for Killavil Jig, E Minor - Aeolian, 6/8 time. The score consists of four staves of music. The first staff begins with a repeat sign. The second staff has measures 5, 6, 7, 8, 9, and 10. The third staff has measures 11, 12, 13, 14, 15, and 16. The fourth staff has measures 17, 18, 19, 20, 21, and 22. The score includes repeat signs and first/second endings.

SLIDES

Slide

Road to Lisdoonvarna

E Dorian

Em D Em A Em

5 Em G A Bm Em G A Fm Em

Slide

O'Keefe's Slide

A Dorian

Am G Am G

4 Am G Em G

6 Am Em Am Em

9 G D Em Am

HORNPIPES

Hornpipe

Boys of Bluehill

D Major

4

7

10

13

16

Off to California

Hornpipe

G Major

5

9

14

REELS

Banshee, The

Reel

G Major



Castle Kelly

Reel

A Minor - Aeolian

